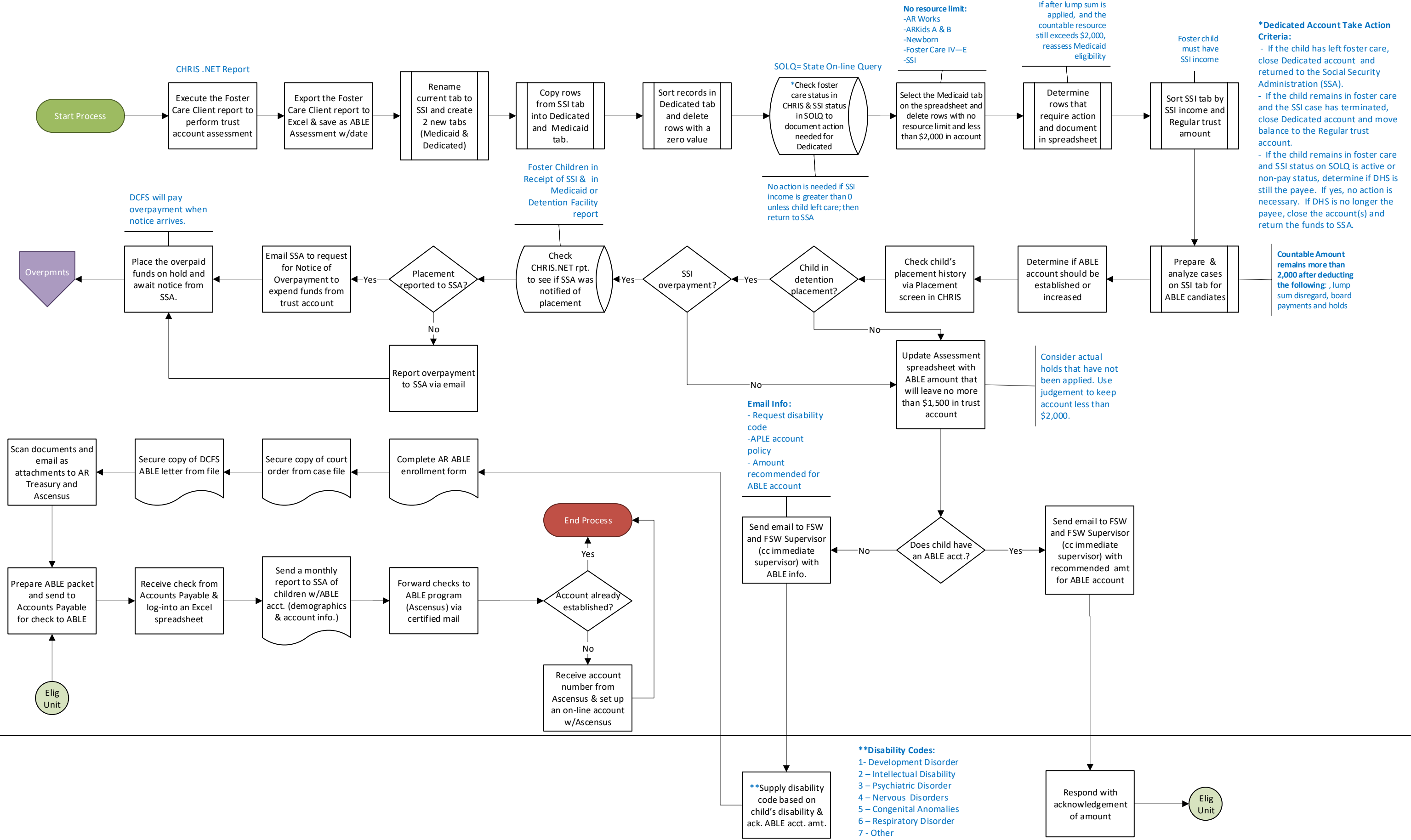


DCFS Eligibility Unit

FSW



No resource limit:
-AR Works
-ARKids A & B
-Newborn
-Foster Care IV-E
-SSI

If after lump sum is applied, and the countable resource still exceeds \$2,000, reassess Medicaid eligibility

***Dedicated Account Take Action Criteria:**
- If the child has left foster care, close Dedicated account and returned to the Social Security Administration (SSA).
- If the child remains in foster care and the SSI case has terminated, close Dedicated account and move balance to the Regular trust account.
- If the child remains in foster care and SSI status on SOLQ is active or non-pay status, determine if DHS is still the payee. If yes, no action is necessary. If DHS is no longer the payee, close the account(s) and return the funds to SSA.

Countable Amount remains more than 2,000 after deducting the following: , lump sum disregard, board payments and holds

No action is needed if SSI income is greater than 0 unless child left care; then return to SSA

Foster Children in Receipt of SSI & in Medicaid or Detention Facility report

DCFS will pay overpayment when notice arrives.

Consider actual holds that have not been applied. Use judgement to keep account less than \$2,000.

Email Info:
- Request disability code
-APLE account policy
- Amount recommended for ABLE account

****Disability Codes:**
1- Development Disorder
2- Intellectual Disability
3- Psychiatric Disorder
4- Nervous Disorders
5- Congenital Anomalies
6- Respiratory Disorder
7- Other

****Supply disability code based on child's disability & ack. ABLE acct. amt.**